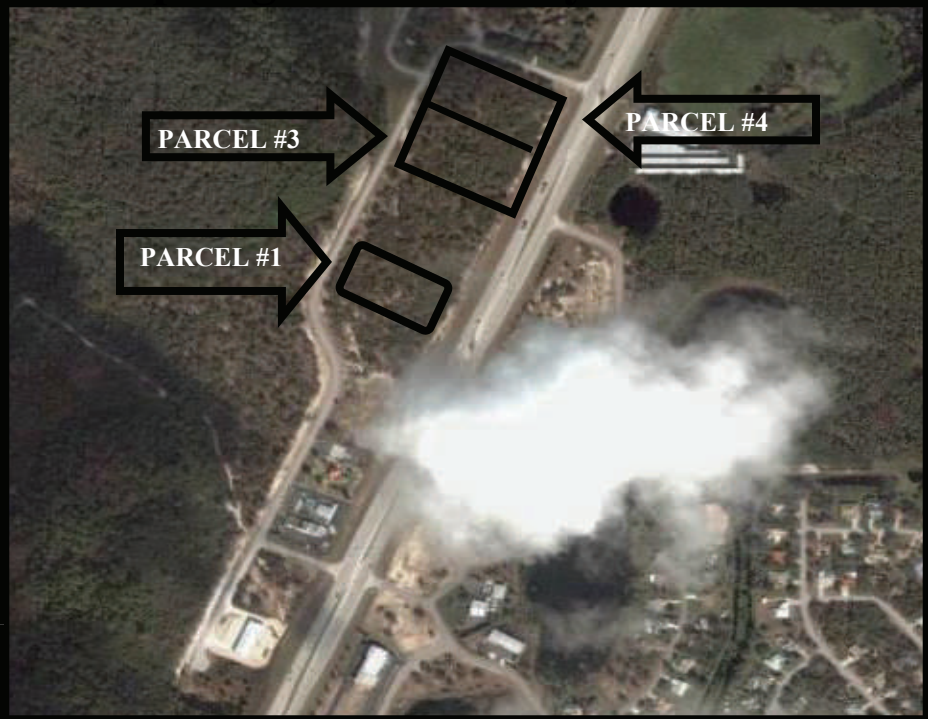
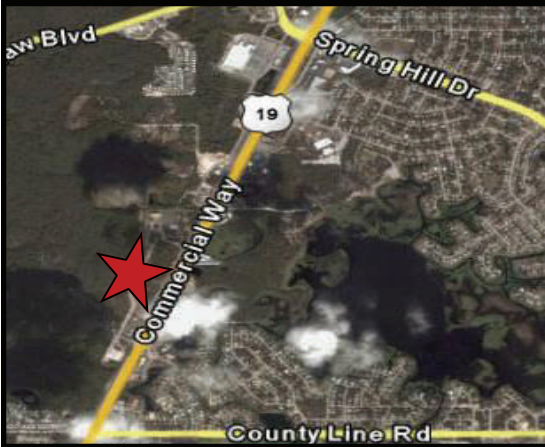


**For Sale
By Public**

AUCTION

Spring Hill U S Hwy 19 North



WHEN

**Tues
May 8 @ 11AM**

WHERE

**Onsite
AUCTION**
of all 3 parcels will be
conducted @
1118 Suzanne Drive
Spring Hill

PREVIEW

**Day Of Sale
From
10 AM**

3 Parcels, AUCTIONED separately
All—Zoned C-2 Commercial

*Parcel # 1—1.87 Acres, MOL
(430 Suzanne Drive)

*Parcel # 3—2.26 Acres , MOL
(1020 Suzanne Drive)
200' US 19 Frontage, MOL

*Parcel # 4-2.23 Acres MOL
(1118 Suzanne Drive)
200' US 19 Frontage, MOL

High Traffic Location On Busy U.S. 19 Hwy
Just 1.5 Miles South Of Spring Hill Blvd

At the Auction, the winning bidder will be required to place a 10% deposit based on the purchase price of the property with the escrow agent. Personal or Business check will be accepted. The balance will be due at closing within 30 days . The seller will pay for and provide a Title Insurance Policy. The seller will provide the deed. The buyer will pay for the Documentary Stamps. All prorations will be as of closing day. A 10% Buyer Premium will be added to the bid to create the purchase price.

Premier Auction Group and the Seller expressly disclaim any liability for error, omissions or changes regarding any information provided for the sale. Premier Auction Group, Inc represents the seller only.



PREMIER
AUCTION GROUP
Accelerated Real Estate Solutions

Steve Doran
(813) 317-5711

Office: (727) 785-4300
2560 Tampa Rd.
Palm Harbor, FL 34684

www.PREMIERAUCTIONGROUP.com